

DevKit8500D

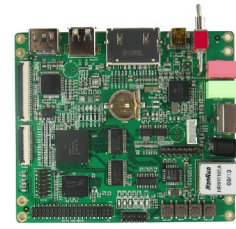
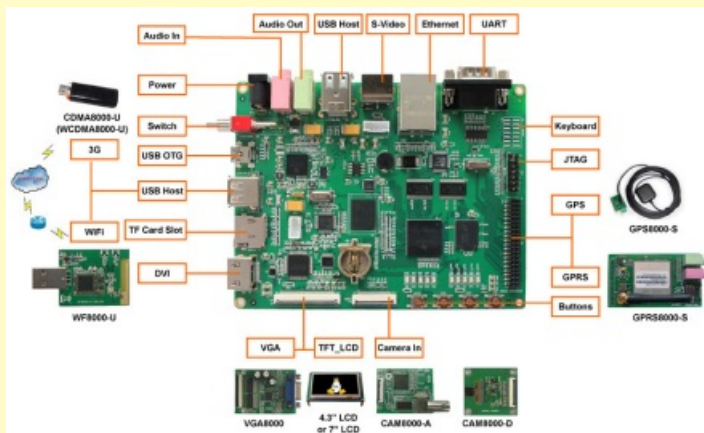
1GHz, DM3730, LCD, DVI, S-Video, Camera, USB, NET, Audio, UART, TF card, Linux, Android, WinCE

Features

- 136.2mm*105.3mm
- Power Supply: +5V
- Working Temp.: 0 to 70 Celsius
- TIDM3730 ARM Cortex-A8 CPU, (AM3715 compatible)
- 512MB DDR SDRAM
- 512MB Nand Flash
- LCD/Touch screen interface
- DVI output interface
- S-Video interface
- Camera interface
- 10/100M Ethernet interface
- Audio input/output ports
- 4*USB Host, 1*USB OTG
- 3*Serial ports
- TF card slot
- 6*6 keyboard interface
- 14pin JTAG interface
- 4*Buttons
- Extension interface (McSPI, McBSP, I2C, HDQ, GPIO)
- Linux 2.6.32, Android 2.2, WinCE6.0

Optional Modules

- 4.3 inch LCD Module (including touch screen)
- 7 inch LCD Module (including touch screen)
- VGA Module
- Analog Camera Module
- Digital Camera Module
- USB WiFi Module
- GPS Module
- GPRS Module
- CDMA2000 USB 3G Module
- WCDMA USB 3G Module



DevKit8000

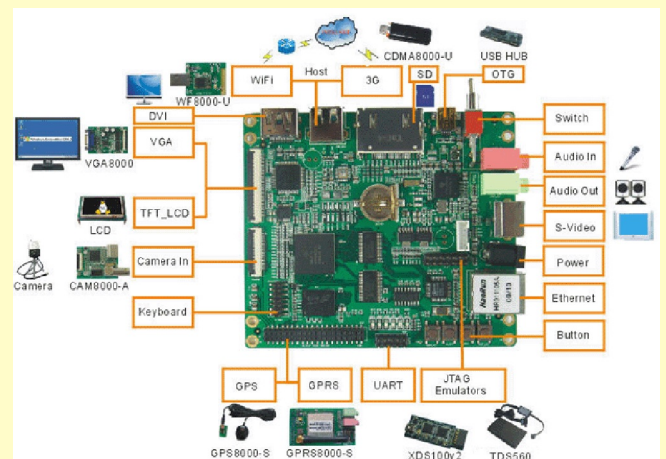
600MHz, OMAP3530, LCD, DVI, S-Video, Camera, USB, NET, Audio, UART, SD card, Linux, WinCE

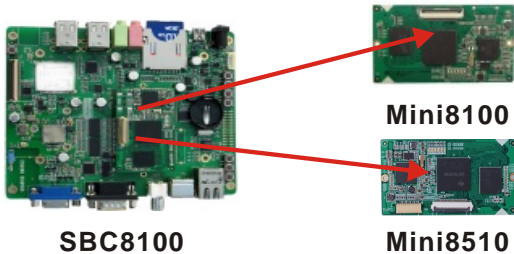
Features

- 110mm*95mm
- Power Supply: +5V
- Working Temp.: 0 to 70 Celsius
- TIOMAP3530, ARM Cortex-A8 CPU
- 256MB DDR SDRAM
- 256MB Nand Flash
- LCD/Touch screen interface
- DVI output interface
- S-Video interface
- Camera interface
- 10/100M Ethernet interface
- Audio input/output ports
- 1*USB Host, 1*USB OTG
- 2*Serial ports
- SD card slot
- 6*6 keyboard interface
- 14pin JTAG interface
- 4*Buttons
- Extension interface (McSPI, McBSP, I2C, HDQ, GPIO)
- Linux 2.6.28, WinCE6.0

Optional Modules

- 4.3 inch LCD Module (including touch screen)
- 7 inch LCD Module (including touch screen)
- VGA Module
- Analog Camera Module
- USB WiFi Module
- GPS Module
- GPRS Module
- CDMA2000 USB 3G Module
- WCDMA USB 3G Module

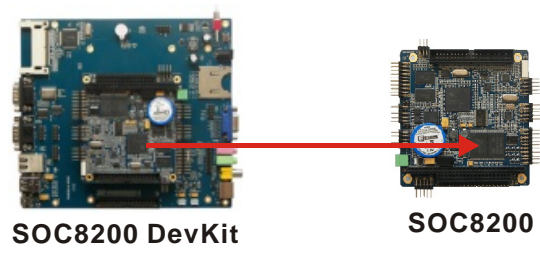




SBC8100

Mini8100

Mini8510



SOC8200 DevKit

SOC8200

SBC8100/SBC8100 Plus

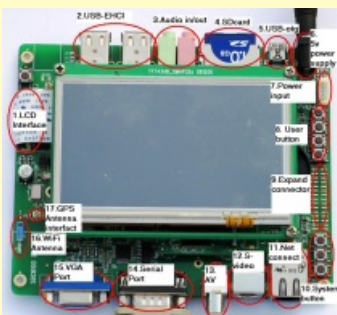
Mini8100 (for SBC8100, 600MHz OMAP3530),
Mini8510 (for SBC8100Plus, 1GHz DM3730),
LCD, VGA, S-Video/TV, Camera, USB, NET, Audio, WiFi/BT,
GPS, SD card, Linux, WinCE

Features

- 144.9mm*114.1mm (expansion board)
- 67mm*37mm (Mini8100/Mini8510)
- Power Supply: +5V
- Working Temp.: 0 to 70 Celsius
- TIOMAP3530, ARM Cortex-A8 CPU (on Mini8100)
- TIDM3730, ARM Cortex-A8 CPU (on Mini8510)
- 256MB DDR SDRAM (on Mini8100/Mini8510)
- 256MB Nand Flash (on Mini8100/Mini8510)
- Camera interface (on Mini8100/Mini8510)
- JTAG interface (on Mini8100/Mini8510)
- 6*LEDs (on Mini8100/Mini8510)
- LCD/Touch screen interface
- VGA interface
- S-Video/AV interface
- 10/100M Ethernet interface
- Audio input/output ports
- 4*USB Host, 1*USB OTG (can be only used as Device)
- RS232 Debug serial port
- WiFi/Bluetooth Module (WG7210, only for SBC8100)
- GPS Module
- SD/MMC card slot
- 4*5 keyboard interface
- 4*Buttons
- Extension interface (UART, I2C, SPI, ADC_IN, PWN_OUT)
- Linux 2.6.29, WinCE 6.0 (for SBC8100)
- Linux 2.6.32, Android 2.2, WinCE 6.0 (for SBC8100 Plus)

Optional Modules

- 4.3 inch LCD Module (including touch screen)
- 7 inch LCD Module (including touch screen)
- Analog Camera Module
- USB Digital Camera Module
- USB WiFi Module
- CDMA2000 USB 3G Module
- WCDMA USB 3G Module



SOC8200

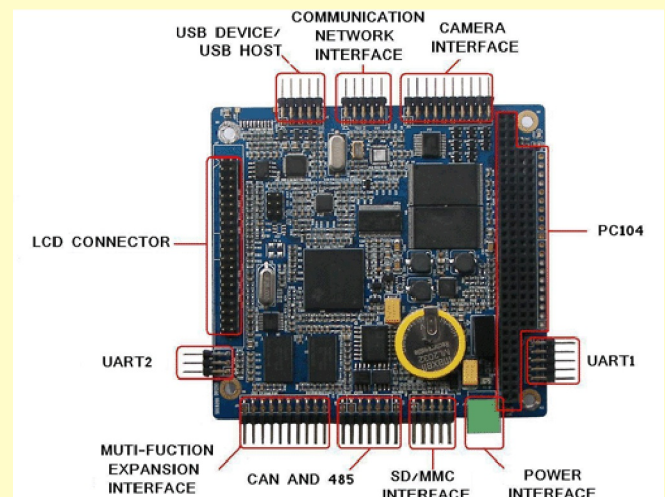
600MHz, AM3517, LCD, DVI, S-Video, Camera, USB, NET,
Audio, UART, SD card, Linux, WinCE

Features

- 170mm*190mm (SOC8200 DevKit expansion board)
- 96mm*90mm (SOC8200)
- Power Supply: +5V (SOC8200), +12V (DevKit)
- Working Temp.: -40 to 85 Celsius
- TI AM3517 ARM Cortex-A8 CPU
- 256MB DDR2 SDRAM
- 256MB Nand Flash
- LCD/Touch screen interface
- 1-channel S-Video output
- 1-channel AV output
- Audio (IIS)
- Camera interface
- 10/100M Ethernet interface
- 2*USB Host, 1*USB Device
- 1*RS232, 1*TTL, 1*RS485
- CAN interface
- SD/MMC interface
- Multi-functional expansion interface (McBSP, IIC, McSPI, TV-OUT)
- PC104 expansion interface (GPMC Bus, MMC, USB, McSPI, UART1, Clock, HDQ)
- JTAG interface
- CF card slot (extend on DevKit expansion board)
- VGA interface (extend on DevKit expansion board)
- Linux 2.6.32, WinCE 6.0

Optional Modules

- 4.3 inch LCD Module (including touch screen)
- 7 inch LCD Module (including touch screen)





VSS3530

Mini8100, 600MHz, OMAP3530, TV Out, DVI, Camera, USB, NET, Audio, TF card, Linux

Features

- Case Size: 76.1mm*120.4mm
- Power Supply: +12V
- Working Temp.: 0 to 70 Celsius
- TIOMAP3530, ARM Cortex-A8 CPU
- 128MB DDR SDRAM
- 128MB Nand Flash
- AV video output interface
- DVI output interface
- Camera interface
- 10/100M Ethernet interface
- Audio input
- Audio output
- 1*USB Host
- TF card slot
- Linux 2.6.28

Optional Modules

- USB Digital Camera Module
- USB WiFi Module
- CDMA2000 USB 3G Module
- WCDMA USB 3G Module



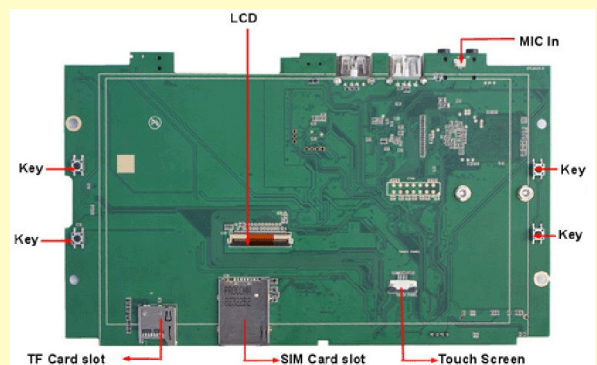
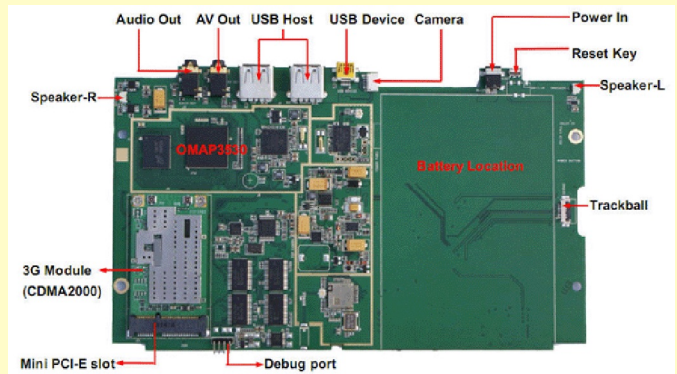
VSS3530 is a video solution provided by Embest, based on Texas Instruments (TI) OMAP3530 Dual core processor, which is oriented to Video output, Image Acquisition, Image Processing, Video monitoring and more other applications.

K7 MID

600MHz, OMAP3530, 7 inch LCD, TV Out, Camera, USB, NET, Audio, TF card, WiFi/BT, GPS, G-sensor, 3G, Android, WinCE

Features

- Power Supply: DC+5V/2A or 5000mAH Battery
- TIOMAP3530 ARM Cortex-A8 CPU
- 256MB DDR2 SDRAM
- 256MB Nand Flash
- TF card slot (MAX= 32GByte)
- 7 inch LCD/Touch screen
- TV output interface (3.5mm Jack, PAL or NTSC)
- Audio output port (3.5mm Jack, stereo)
- MIC in (Built-in, support recording)
- 2*Speakers (Stereo, 0.5W +0.5W)
- 1.3Mega pixel CMOS Camera
- WLAN 802.11b/g
- Bluetooth (V2.1, EDR+, A2DP bluetooth stereo)
- GPS (SiRF III)
- 3G (Extended through MiniPCIe socket)
- 2*USB Host, 1*USB Device
- 6*Keys
- G-sensor
- Android 2.2, WinCE 6.0





SBC8530

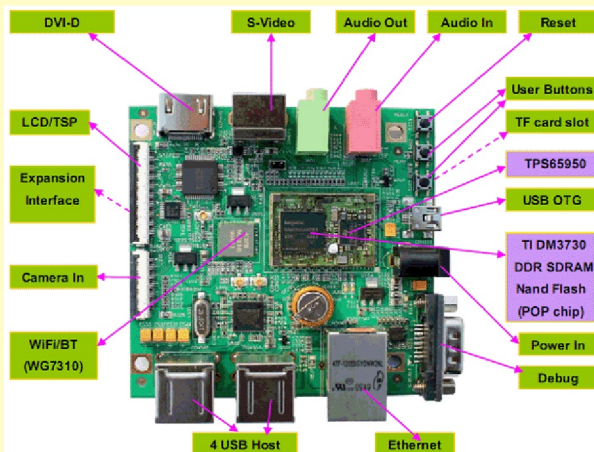
PoP CPU/Memory, 1GHz DM3730, LCD, DVI, S-Video, Camera, USB, NET, Audio, WiFi/BT, TF card, Linux, Android, WinCE

Features

- 86mm*86mm
- Power Supply: +5V
- Working Temp.: 0 to 70 Celsius
- TIDM3730 ARM Cortex-A8 CPU
- 512MB DDR SDRAM
- 512MB Nand Flash
- LCD/Touch screen interface
- DVI output interface
- S-Video interface
- Camera interface
- 10/100M Ethernet interface
- WiFi/Bluetooth module (WG7310)
- Audio input/output ports
- 1*USB Host, 1*USB OTG
- Debug Serial port
- TF card slot
- 3*Buttons
- Extension interface (Serial ports, McSPI, McBSP, I2C, HDQ)
- Linux 2.6.32, Android 2.2, WinCE6.0

Optional Modules

- 4.3 inch LCD Module (including touch screen)
- 7 inch LCD Module (including touch screen)
- VGA Module
- Analog Camera Module
- Digital Camera Module
- USB WiFi Module
- GPS Module
- GPRS Module
- CDMA2000 USB 3G Module
- WCDMA USB 3G Module



SBC8018

375MHz, AM1808, LCD, 2-ch Camera, SATA, UART, USB, NET, Audio, TF card, JTAG, Linux, WinCE

Features

- 112.24mm*82.29mm
- Power Supply: +5V
- Working Temp.: 0 to 70 Celsius
- TIOMAP3530, ARM Cortex-A8 CPU
- 128MB Mobile DDR SDRAM
- 128MB Nand Flash
- LCD/Touch screen interface
- 2*Camera interfaces
- 10/100M Ethernet interface
- Audio input interface (Mic In)
- Two-channel Audio output interface (Line Out)
- 1*USB Host, 1*USB OTG
- 1*Debug serial port (RS232)
- 2*Serial ports (TTL)
- TF card slot
- 1*Serial ATA connector
- 14pin JTAG interface
- 4*Buttons
- Extension interface
- Linux 2.6.33, WinCE6.0

Optional Modules

- 4.3 inch LCD Module (including touch screen)
- 7 inch LCD Module (including touch screen)
- Analog Camera Module
- USB WiFi Module
- CDMA2000 USB 3G Module
- WCDMA USB 3G Module

