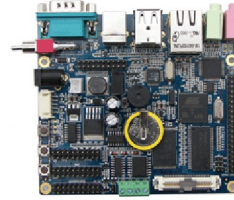


SBC9261-I



Mini9261-I



SBC6000X

200MHz, AT91SAM9261S, LCD, USB, NET, Audio, RS232, RS485, SD, Linux, WinCE

Features

- 106.5mm*94mm
- Power Supply: +12V
- Working Temp.: -10 to 70 Celsius
- Atmel SAM9261S ARM926EJ-S CPU
- 64MB SDRAM
- 128MB Nand Flash
- 4/8MB Data Flash (reserved for soldering)
- 2Kbit EEPROM
- LCD/Touch screen interface
- 10/100M Ethernet interface
- Audio input and output ports
- 2*USB Host, 1*USB OTG
- 3*Serial ports
- 1*SPI interface
- SD card slot
- 4*4 keyboard interface
- 16*GPIOs
- Battery backed RTC
- Buzzer
- 3*Buttons
- Bus interface (with buffer)
- Linux 2.6.24, WinCE6.0

Optional Modules

- 4.3 inch LCD Module (including touch screen)
- 5.6 inch LCD Module (including touch screen)
- 7 inch LCD Module (including touch screen)
- SBC6000_LVDS RGB-to-LVDS converter board

SBC9261-I

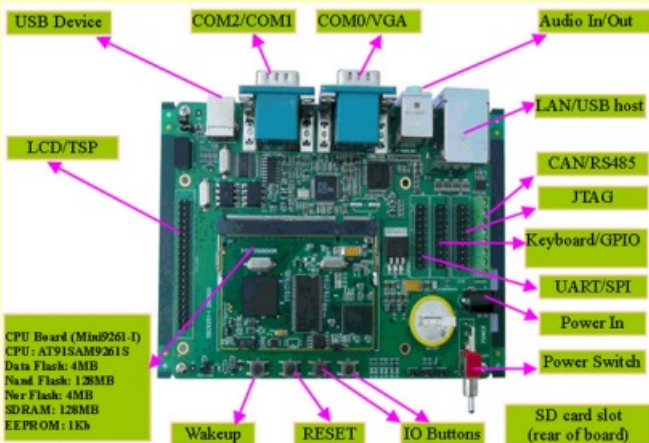
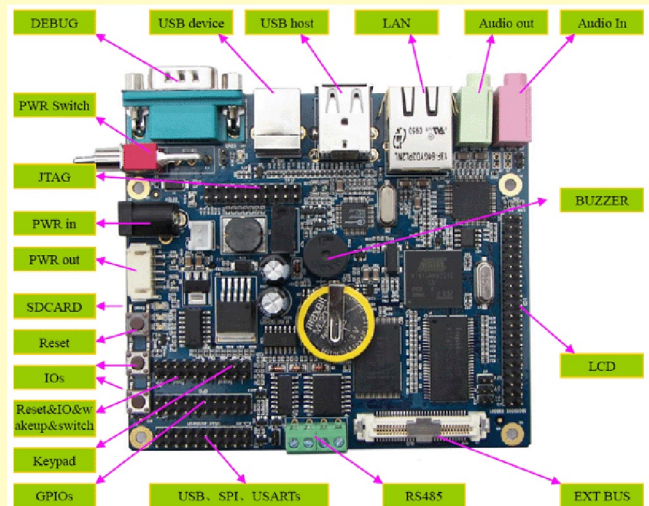
Mini9261-I, 200MHz, AT91SAM9261S, LCD, VGA, USB, NET, CAN, Audio, RS232, RS485, SD, Linux, WinCE

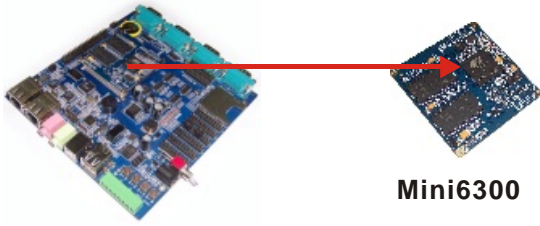
Features

- 141.4mm*109.5mm (expansion board)
- 67.6mm*47mm (Mini9261-I)
- Power Supply: +12V
- Working Temp.: 0 to 70 Celsius
- Atmel SAM9261S ARM926EJ-S CPU (on Mini9261-I)
- 64MB SDRAM (on Mini9261-I)
- 256MB Nand Flash (on Mini9261-I)
- 8MB Nor Flash (on Mini9261-I)
- 4Mbyte SPI serial DataFlash (on Mini9261-I)
- 1Kbit EEPROM (on Mini9261-I)
- LCD/Touch screen interface
- VGA interface
- Audio input and output ports
- 10/100M Ethernet interface
- 2*USB Host, 1*USB Device
- 4*Serial ports
- CAN interface
- SD card slot
- 4*4 keyboard interface
- 20-pin JTAG interface
- Battery backed RTC
- 4*Buttons
- 13*GPIOs
- Linux 2.6.24, WinCE6.0

Optional Modules

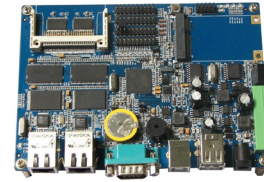
- 4.3 inch LCD Module (including touch screen)
- 5.6 inch LCD Module (including touch screen)
- 7 inch LCD Module (including touch screen)





SBC6300X

Mini6300



SBC6300X

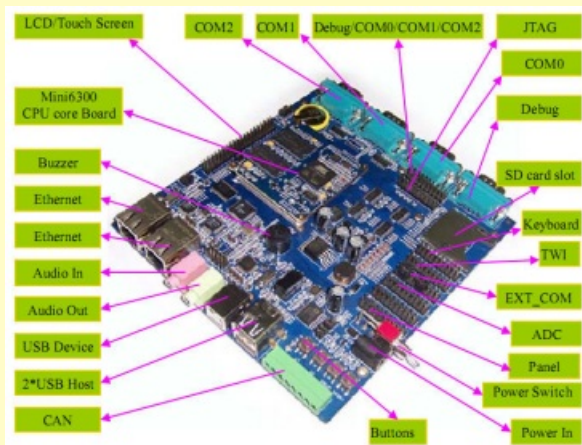
Mini6300, 200MHz, AT91SAM9263S, LCD, TWI, USB, 2*NET, CAN, RS232, RS485, Audio, ADC, SD, Linux, WinCE

Features

- 150mm*143.5mm (expansion board)
- 52mm*52mm (Mini6300)
- Power Supply: +12V
- Working Temp.: -10 to 70 Celsius
- Atmel SAM9263 ARM926EJ-S CPU (on Mini6300)
- 64MB SDRAM (on Mini6300)
- 128MB Nand Flash (on Mini6300)
- 2Kbit EEPROM (on Mini6300)
- LCD/Touch screen interface
- TWI interface
- 2*Ethernet interfaces (10/100M)
- 2*USB Host, 1*USB Device
- CAN interface
- 8*Serial ports
- Audio input and output interfaces
- 8-channel 12-bit ADC
- SD/MMC card slot
- 6*6 keyboard interface
- 4*Buttons
- 41*GPIOs
- 21-pin JTAG interface
- 20-pin Panel interface
- Battery backed RTC
- Buzzer
- Linux 2.6.24, WinCE 6.0

Optional Modules

- 4.3 inch LCD Module (including touch screen)
- 5.6 inch LCD Module (including touch screen)
- 7 inch LCD Module (including touch screen)

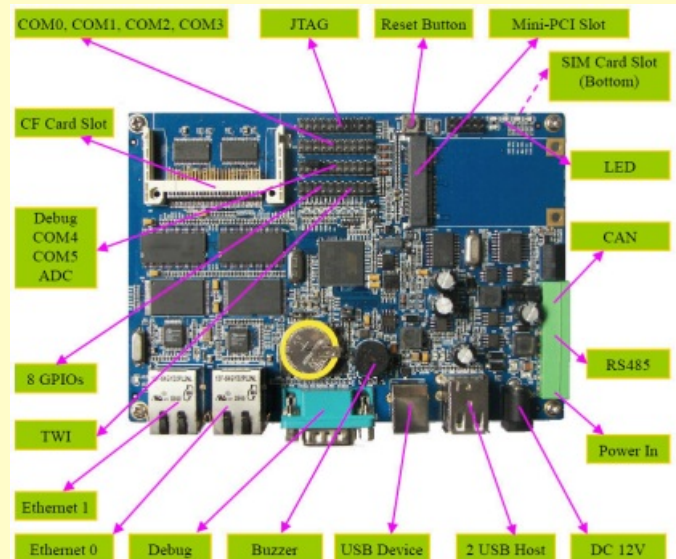


SBC6020

400MHz, AT91SAM9G20, USB, 2*NET, RS232, RS485, CAN, ADC, CF, Linux

Features

- 150mm*106mm
- Power Supply: +12V
- Working Temp.: -10 to 70 Celsius
- Atmel SAM9G20 ARM926EJ-ST CPU
- 64MB SDRAM
- 128MB Nand Flash (256MB for option)
- 4MB Nor Flash
- 2Kbit EEPROM
- 2*Ethernet interface (10/100M)
- 2*USB Host, 1*USB Device
- 7*Serial ports
- CAN interface
- 4-channel 10-bit ADC
- CF card slot
- 20-pin JTAG interface
- Mini-PCI expansion interface (SDIO, SPI, COM2, USB Host)
- Buzzer
- Reset button
- Watchdog timer
- 8*GPIOs
- Linux 2.6.30



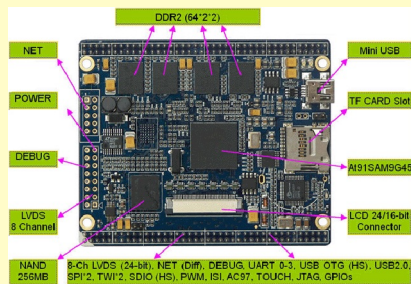
SBC6045 Mini6045, 400MHz, AT91SAM9G45, LVDS, LCD, USB, NET, CAN, RS232, RS485, Audio, TF, SD, Linux, WinCE

Mini6045

- 82mm*67mm
- Power Supply: +5V
- Atmel SAM9G45 ARM926EJ-S CPU
- 128MB*2 DDR2 SDRAM
- 256MB Nand Flash
- 4MB Data Flash
- 2Kbit EEPROM
- Precise RTC
- Watchdog timer
- High-speed USB2.0 OTG port
- 10/100M Ethernet port
- LCD/Touch screen interface
- LVDS interface
- TF card slot
- Power indicator
- System working status indicator
- Two 2.0mm pitch 80-pin expansion connectors

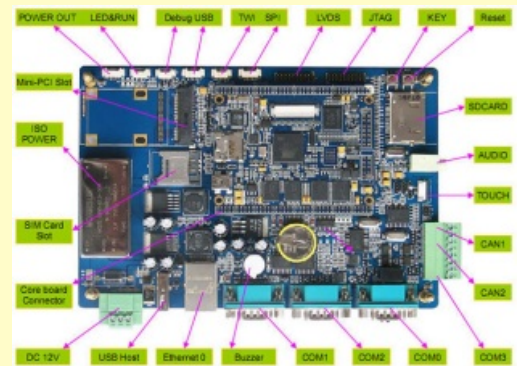
Optional Modules

- 4.3 inch LCD Module (including touch screen)
- 7 inch LCD Module (including touch screen)



SBC6045 Expansion Board

- 185mm*125mm
- Power supply: +12V (with isolation and power)
- 5*Serial ports
- USB2.0 High-speed Host port
- 10/100M Ethernet port
- 2*CAN interfaces
- TWI and SPI interfaces
- LVDS interface
- Touch screen interface
- Audio output port
- Buzzer
- 20-pin JTAG interface
- IO and Reset Buttons
- SD card slot
- SIM card slot
- Mini-PCI extension slot
- Linux 2.6.30, WinCE 6.0



SBC6845 Industrial-level SBC, 400MHz, AT91SAM9G45, LCD, USB, NET, CAN, RS232, RS485, Audio, SD, Linux, WinCE

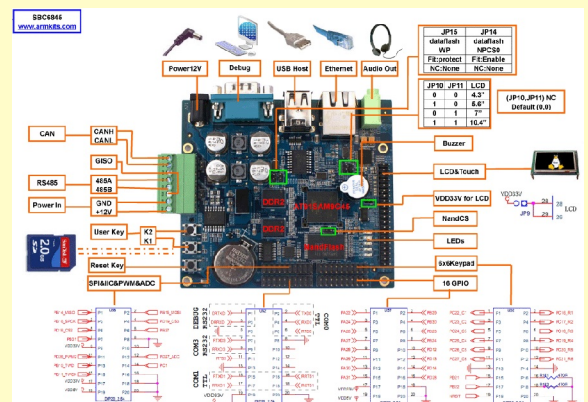
Features

- 106.5mm*94mm (6-layer PCB design)
- Power Supply: +12V
- Atmel SAM9G45 ARM926EJ-S CPU
- 64MB*2 DDR2 SDRAM
- 256MB Nand Flash
- 4MB Data Flash
- Precise RTC
- 3-wire RS232 serial port (TTL is designable)
- 3-wire TTL serial port (RS232 is designable)
- 5-wire TTL serial port (RS232 is designable)
- 3-wire RS485 serial port with isolation (TTL is designable)
- 3-wire RS232 serial port (TTL is designable)
- One CAN 2.0 interface (with power and signal isolation)
- Two High-speed USB 2.0 Host ports, 480Mbps
- 10/100M Ethernet port
- SDHC card slot (Hot plug-and-play)
- LCD/Touch screen interface
- Audio output port
- Buzzer
- 6*6 matrix keypad interface
- 16 GPIOs extended from CPU
- 3 Keys (one for Reset and two for user defined)

- 5 LED status indicators
- One 2.54mm pitch 2*10-pin expansion interface
- Linux 2.6.30, WinCE 6.0

Optional Modules

- 4.3 inch LCD Module (including touch screen)
- 7 inch LCD Module (including touch screen)
- SBC6000_LVDS RGB-to-LVDS converter board





SBC6245



Mini6245



SBC6345



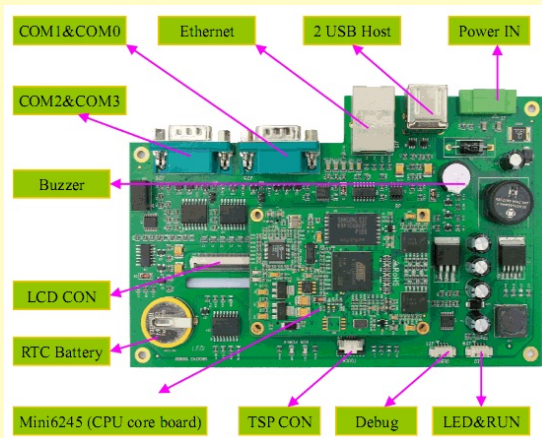
Mini6245

SBC6245

Mini6245, 400MHz, AT91SAM9G45, LCD, USB, NET, RS232, RS485, Linux, WinCE

Features

- Power Supply: +12V
- Working Temp.: -10 to 70 Celsius
- Atmel SAM9G45 ARM926EJ-S CPU (on Mini6245)
- 128Mbyte (64MB*2) DDR2 SDRAM (on Mini6245)
- 128MB Nand Flash (on Mini6245)
- 1Kbit EEPROM (with encryption, on Mini6245)
- LCD interface
- Touch screen interface
- 10/100M Ethernet interface
- 2*USB Host
- 5*Serial ports
- Battery backed RTC
- Buzzer
- One power indicator
- One system working status indicator
- Linux 2.6.30, WinCE 6.0

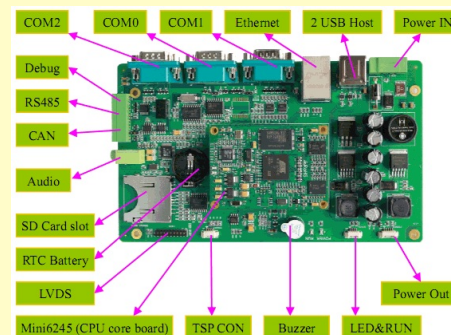


SBC6345

Mini6245, 400MHz, AT91SAM9G45, USB, NET, RS232, RS485, CAN, SD, Audio, Linux, WinCE

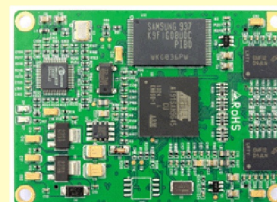
Features

- Power Supply: +24V
- Working Temp.: -10 to 70 Celsius
- Atmel SAM9G45 ARM926EJ-S CPU (on Mini6245)
- 128Mbyte (64MB*2) DDR2 SDRAM (on Mini6245)
- 128MB Nand Flash (on Mini6245)
- 1Kbit EEPROM (with encryption, on Mini6245)
- LVDS interface
- Touch screen interface
- 12V Power output interface
- One-channel external Watchdog function
- One power indicator
- One system working status indicator
- 10/100M Ethernet interface
- 2*USB Host
- 5*Serial ports
- CAN interface
- SD card slot
- Audio output port
- Battery backed RTC
- Buzzer
- Linux 2.6.30, WinCE 6.0

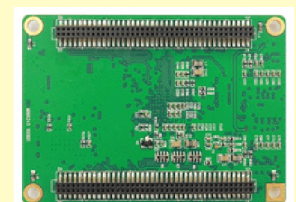


Mini6245

- 70mm*49.9mm
- Atmel SAM9G45 ARM926EJ-S CPU
- 64MB*2 DDR2 SDRAM
- 128MB Nand Flash
- 1Kbit EEPROM
- 10/100M Ethernet controller chip
- One power indicator
- One system working status indicator
- Two 1.27mm pitch dual row 80-pin female headers (UART0-3, Debug serial port, Ethernet, USB Host, 2 SPI, 2 TWI, SDIO, PWM, Ac97, LCD, Touch Screen, JTAG and all IOs are brought out via the two connectors.)



Top-view



Bottom-view



HMI Solution



TH056A1

SBC6245, 400MHz, AT91SAM9G45, 5.6 inch LCD with Touch Screen, USB, NET, RS232, RS485, Linux, WinCE

Features

- Power Supply: +24V
- Working Temp.: -10 to 70 Celsius
- Atmel SAM9G45 ARM926EJ-S CPU
- 128MB DDR2 SDRAM
- 128MB Nand Flash
- 2*Serial ports
- 2*USB2.0 High-speed Host ports
- 10/100M Ethernet interface
- 5.6 inch LCD with touchscreen (640*480 pixel)
- Battery backed RTC
- 2*LEDs
- Linux 2.6.30, WinCE6.0



TH104A1

SBC6345, 400MHz, AT91SAM9G45, 10.4 inch LCD with Touch Screen, USB, NET, CAN, RS232, RS485, Audio, SD, Linux, WinCE

Features

- Power Supply: +24V
- Working Temp.: -10 to 70 Celsius
- Atmel SAM9G45 ARM926EJ-S CPU
- 128MB DDR2 SDRAM
- 128MB Nand Flash
- 4*Serial ports
- 2*USB2.0 High-speed Host ports
- 10/100M Ethernet interface
- CAN interface (with power and signal isolation)
- 10.4 inch LCD with Touch Screen (800*600 pixel)
- Audio output ports
- SD card slot
- Battery backed RTC
- 2*LEDs
- Linux 2.6.30, WinCE6.0

